

Product Catalog

- * *Articulators*
- * *EZ Bows*
- * *Mounting Plates*
- * *Facebows*
- * *Measures Condyle Displacement*
- * *Hinge Axis Recorder*
- * *Instrumentation Systems*
- * *Supplies*

www.ad2usa.com



**Inside Front
Cover
Blank**

Welcome to AD2

When Dr. Bob Williams first envisioned AD2 years ago, he knew there were doctors globally that needed access to high quality articulators, facebows and other precision instruments. At the time, he didn't fully realize just how many people he was about to help by creating this company.

What started as a mere concept has now turned into a growing line of products being sold all over the world. Our catalog is a reflection of this growth and our products...evolving, expanding and raising the bar on quality.

Whether you're an existing customer or someone still contemplating purchasing AD2, we invite you to take a look at our catalog. But we're not done quite yet...keep your eyes on our website at www.ad2usa.com for more new product releases still to come.

Enjoy,
The AD2 Team



All AD2 products are proudly
made in the U.S.A.

TABLE OF CONTENTS

Articulators & Accessories.....1

- AR100011 – Articulator with Straight Incisal Pin, 1.5 Analogs
- AR100012 – Articulator with Curved Incisal Pin, 1.5 Analogs
- AR100021 – Articulator with Straight Incisal Pin, 1.5 Analogs
- AR100022 – Articulator with Curved Incisal Pin, 1.5 Analogs
- AR100080 – Articulator Mounting Stand
- AR100090 – Articulator Test Column (non-magnetic)
- AR100290 – Magnetic Test Column
- AR130114 – DynaLink
- AR140000 – Straight Incisal Pin Module
- AR140050 – Curved Incisal Pin Module
- AR200023 – Incisal Table Assembly
- AR210050 – Bite Fork Support
- AR240079 – Mandibular Mounting Plate Spacer
- AR300000 – Articulator Support Leg
- AR330005 – 0.5mm Analog Pair (left and right)
- AR330008 – 0.5mm Analog Pair, Clear (left and right)
- AR330010 – 1.0 mm Analog Pair (left and right)
- AR330015 – 1.5 mm Analog Pair (left and right)
- AR330020 – 2.0 mm Analog Pair (left and right)
- AR330025 – 2.5 mm Analog Pair (left and right)
- AR330000 – Complete Analog Set (0.5 mm – 2.5 mm)
- AR340000 – 0 BM Analog System
- AR350010 – Condyle Positioner (set)
- AR510100 – Cruzar Articulator with Mounting Stand and Test Column
- AR510200 – Cruzar Articulator (no mounting stand or test column)

EZ Bows & Accessories.....7

- AR540250 – EZ Bow Assembly
- AR550060 – Waxing Guide Kit
- AR560150 – AD2/Panadent EZ Bow System
- AR560250 – Stratos EZ Bow System
- AR560350 – Artex EZ Bow System
- AR560450 – SAM EZ Bow System
- AR560550 – KaVo EZ Bow System
- AR560650 – Denar Mark 300 Series EZ Bow System
- AR560750 – Hanau EZ Bow System
- AR560850 – Whip Mix Quick Mount EZ Bow System
- AR560950 – Denar Articulator EZ Bow System
- AR500050 – AD2/Panadent Adjustable Platform
- AR500150 – AD2/Panadent Fixed Platform
- AR500250 – Stratos Adjustable Platform
- AR500350 – Artex Adjustable Platform
- AR500450 – SAM Adjustable Platform
- AR500550 – KaVo Adjustable Platform
- AR500650 – Denar Mark 300 Series Adjustable Platform
- AR500750 – Hanau Adjustable Platform
- AR500850 – Whip Mix Adjustable Platform
- AR500950 – Denar Adjustable Platform
- MP300065 – Index Trays (bag of 50 trays)

Mounting Plates & Accessories.....10

- HW910030 – Magnet (neodymium)
- MP270065 – AD2/Panadent/Whip Mix Compatible Screw Mounting Plates
- MP270165 – Denar/Hanau (Twin pin) Compatible Screw Mounting Plates
- MP280000 – AD2 Magnetic Mounting System
- MP280010 – Magnetic Mounting Base Assembly
- MP280020 – Magnet Holder
- MP280065 – AD2/Panadent Compatible Magnetic Mounting Plates
- MP280065-B – Panadent Compatible Magnetic Mounting Plates, Blue
- MP290065 – Whip Mix/Denar/Hanau Compatible Magnetic Mounting Plates
- MP291065 – Stratos Compatible Magnetic Mounting Plates
- MP293065 – SAM Compatible Magnetic Mounting Plates
- MP293065-Y – SAM Compatible Magnetic Mounting Plates, Yellow
- MP294065 – Kavo Compatible Magnetic Mounting Plates
- MP295065 – Denar Mark 300 Series Compatible Plates
- MP296065 – Whip Mix/SAM QuickMount Plates
- MP297065 – Artex Compatible Magnetic Mounting Plates
- MP298065 – BioArt/Artex Compatible Magnetic Mounting Plates
- MP300065 – Index Trays

Facebows & Accessories.....15

- FB400000 – Anatomic Facebow
- FB400015 – Nasion Relator Assembly
- FB400115 – Extended Nasion Relator
- FB400023 – Mounting Table Assembly
- FB400027 – Flat Bite Fork Assembly (includes bite fork and stem assembly)
- FB400028 – Flat Bite Fork Only
- FB400029 – Curved Bite Fork Only
- FB400129 – Curved Bite Fork Assembly
- FB400030 – Bite Fork Stem Assembly
- FB400038 – Pedo Bite Fork
- FB400039 – Infant Bite Fork
- FB401128 – Edentulous Bite Fork

MCD & Accessories.....18

- MC100010 – MCD
- MC170070 – MCD Magnetic Support Column
- MC700000 – MCD Patient Graph Pads
- MC700010 – MCD Data Record Sheets

Hinge Axis Recorder.....19

- HA750000 – Hinge Axis Recorder
- HA750090 – Hinge Axis Graph Pad
- HA760000 – Hinge Axis Recorder Deluxe System
- HA750000 – Hinge Axis Recorder & AR330000 complete analog kit
- HA770005 – Discluder (5 pack)
- HA770010 – Discluder (10 pack)
- HA750010 – Clutch Bracket Assembly

Delar Wax Products & Accessories.....21

- DL600008 – Delar 3"x 3" Bite Registration Wax
- DL600013 – Delar Tapered Wax Wafers
- DL600015 – Delar Centric Record System
- DL600016 – Delar Centric Record Set
- DL600021 – Delar Regular D-Style Wax Wafers
- DL600022 – Delar Mandibular Guide Shims
- DL600023 – Delar Full Bite Fork Rim
- DL600024 – Delar Half Bite Fork Rim
- DL600025 – Delar Wax Pencils
- DL600026 – Delar Large D-Style Wax Wafers
- DL600027 – Delar Sticky Wax
- DL600028 – Delar Perforated Wax Wafer

Instrumentation Systems.....23

- AR100005 – Professional System (non-magnetic, with straight incisal pin articulator)
- AR100006 – Professional System (non-magnetic, with curved incisal pin articulator)
- AR100007 – Magnetic Professional System (with straight incisal pin articulator)
- AR100008 – Magnetic Professional System (with curved incisal pin articulator)
- AR110050 – Bioesthetic Basic System (non-magnetic, with curved incisal pin articulator)
- AR110051 – Bioesthetic Basic Magnetic System (with curved incisal pin articulator)
- AR110060 – Bioesthetic Professional System
- AR110061 – Bioesthetic Magnetic Professional System
- AR540200 – EZ Deluxe System (with straight incisal pin)
- AR540220 – EZ Deluxe System (with curved incisal pin)
- AR540300 – Professional EZ System (with straight incisal pin)
- AR540350 – Professional EZ System (with curved incisal pin)
- AR550100 – EZ Cruzar System (includes mounting stand and test column)
- AR550200 – EZ Cruzar System (no mounting stand or test column)
- PK900010 – Professional System Plastic Travel Case

Dental Supplies.....29

- AR500025 – Accu-Trays
- AR600010 – Aesthetic Ruler
- DS100010 – Class 1 Lucia Jigs
- DS100020 – Class 2 Lucia Jigs
- TP400027 – Bite Fork Stabilizers
- FB400050 – Plastic bite fork
- AR550060 – Waxing Guide Kit

Articulators & Accessories

The AD2 articulator is crafted from machined aluminum, using a polished finish and anodized frames for long-lasting beauty and easy clean up. Our semi-adjustable, Arcon style articulator accommodates Bennett movements up to 2.5mm, and the angle of eminence can be set from 25° – 72°. Your articulator arrives calibrated, ready to use and is interchangeable with other calibrated AD2 articulators as well as all calibrated Panadent® articulators for easy transferral of mounted cases.

Our articulator includes many features designed to make it easy and intuitive to use, including a polished, anodized finish for improved aesthetics and maintenance, modular incisal pins (which allow a single articulator to function as both a straight and curved pin instrument), horizontal and vertical reference lines on the lower frame, and magnetic centric latch retention.



**AR100022 Articulator with Curved
Incisal Pin Module**



**AR100021 shown with optional
MP280000 magnetic mounting system**

Articulators & Accessories (cont.)



AR100011 Articulator with Straight Incisal Pin Module, Mounting Stand and Test Column. (Not Shown: AR100012 Articulator with Curved Incisal Pin module, Mounting Stand and Test Column)

First time buyers of AD2 articulators should consider our AR100011 or AR100012 models, which includes an aluminum mounting stand and test column for calibration testing. If you already have an AD2, no need to buy unnecessary extras...just pick up the AR100021 or AR100022, which is the articulator only (no stand or test column).



AR510100 Cruzeiro Articulator with Mounting Standing and Test Column; (Not Shown: AR510200 Cruzeiro Articulator, no Mounting Stand and Test Column)

With a built-in angle of eminence set at 20 degrees, the Cruzeiro articulator simplifies the mounting and diagnosis of cases for doctors and labs alike. It includes everything you'll need to get started including magnetic mounting and a support leg. The Cruzeiro is being recommended by Dr. John Kois of The Kois Center in Seattle, Washington for all of his students. All Cruzeros are interchangeable with each other and are fully compatible with the Kois Dento Facial Analyzer.



AR140000 Straight Incisal Pin Module

When you need measurements in millimeters, try the AD2 Straight Incisal Pin Module for your new articulator. The module slides easily into the upper frame and tightens down with a simple twist of your hand.



AR140050 Curved Incisal Pin Module

The Curved Incisal Pin Module is calibrated using a relational measurement starting from the incisal edge. The tip of the pin remains in the same vertical dimension on the incisal table when the articulator is opened and closed.



AR100080 Mounting Stand

If you need an extra mounting stand for your practice or lab, look no further. The mandibular mounting stand is constructed of machined aluminum and powder coated to keep your work area looking good.

Articulators & Accessories (cont.)



AR100290 Magnetic Test Column (Not Shown: AR100090 Test Column (non-magnetic))

If you've made the move to magnetic mounting, you'll still want to do a calibration test on occasion with your test column. Instead of removing the magnetic bases, use this magnetic style test column. For the test column upper plate, simply substitute in an AD2 magnetic mounting plate and you're ready to go!



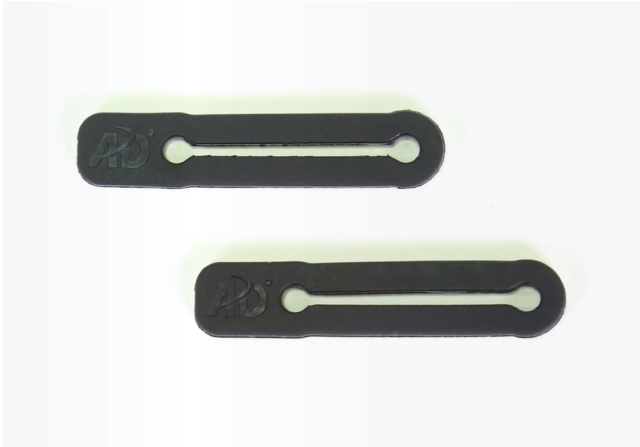
AR300000 Support Leg

Ready to get a new perspective on your work? With the AD2 Support Leg, you can safely lean your articulator and MCD back at a 45° angle. The leg snaps on easily, looks stylish and still leaves the side frame of the articulator or MCD open for your hand to grab and lift with.



AR240079 Mandibular Mounting Plate Spacer

We've mentioned that AD2 articulators interchange seamlessly with some competitors' models, but what do you do when you've been working with "short", or "low" articulators? As always, we've provided an easy solution with our Mandibular Mounting Plate Spacer. Simply remove the lower mounting knob from your articulator and attach (with two provided allen head screws) our plate spacer. All critical vertical dimensions are maintained and you're back to work in just a few short minutes.



AR130114 DynaLink

Manufactured from natural rubber with extra thickness, our newest design is durable yet smooth and natural feeling for trouble-free use.



AR200023 Incisal Table Assembly

Whether you've lost your incisal table or simply need more on hand for use with acrylic, AD2 can help you. We manufacture our tables from glossy black ABS plastic and include a Teflon washer and aluminum thumb screw.



AR210050 Bite Fork Support

Our Bite Fork Support is designed with an anodized aluminum body and a spring loaded vertical post for easy height adjustment. No need to worry about magnetic mounting vs. screw-on mounting.....our bite fork support is designed to work in all mounting environments.



AR350010 Condyle Positioner Set

These adjustable Condyle Positioners can be set for lateral, horizontal and vertical positions to the nearest 0.1mm. If you are simulating model surgery or making repositioning splints, simply install the Condyle Positioners in place of the motion analogs.

Articulators & Accessories (cont.)



AR330000 Analog Kit

Different patients mean different side shift patterns. We've got you covered though with our family of precision molded analogs ranging from 0.5 mm all the way to 2.5 mm (sold in pairs). If you're looking to save some money, purchase the AR330000, which includes all 5 pairs of analog sizes for one low price (up to 20% less expensive than buying individually).



AR330005
0.5mm Analogs



AR330010
1.0mm Analogs



AR330015
1.5mm Analogs



AR330020
2.0mm Analogs

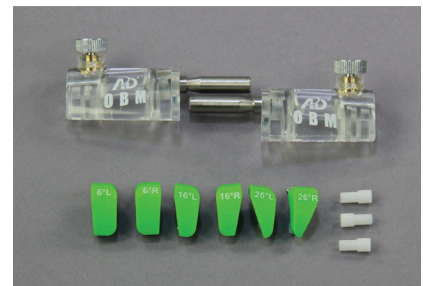


AR330025
2.5mm Analogs



AR330008 0.5mm Clear Analog

If you're in a teaching environment, check out our 0.5mm Clear Analog. What better illustrates your points than having students observe the condyle move through the fossa box? Let your students experience their "Aha" moment with this great instructional analog.



AR340000, 0 B.M. (Bennett Movement) Analog Kit

You asked, we listened...AD2 has the complete solution when immediate side shift and different condylar curvatures are needed. With clear 0 Bennett movement analogs and 3 different sets of condyle curvature inserts (6°, 16° and 26°), we supply you with everything needed for your office or learning environment.

EZ Bows & Accessories

Our EZ Bow scores a bullseye with best-of-breed functionality so facebow records can be obtained with maximum comfort and minimal time. When combined with any of our adjustable platforms, the EZ Bow index tray can be transferred to most major brands of articulators. If you're already a Kois-trained doctor, you can migrate to the EZ Bow seamless using the same techniques you've already developed.



AR540250 EZ Bow Assembly

Our EZ Bow Assembly has everything you need to quickly capture facebow records, including the EZ Bow, magnetic laser crosshair, magnetic 3D bubble level cube and 20 Index Trays. It is based on the findings of Dr. John Kois, using an average value of 100mm from the incisal edge to the center of the hinge axis. The EZ Bow, adjustable platform and index trays are all compatible with the Kois Dento Facial Analyzer



AR560150 EZ Bow System for AD2 and Panadent

When you're ready to capture facebow records and mount your cases, you're ready for our EZ Bow System. It combines all of the items found in the AR540250 EZ Bow as well as an adjustable platform for mounting the upper cast to the articulator. Designed for AD2 and "tall" Panadent articulators with magnetic mounting.

Not Shown:

AR560250 – EZ Bow System for Stratos Articulators (for use with Stratos 100, 200 and 300 articulators with Adesso base magnetic mounting)

AR560350 – EZ Bow System for Artex Articulators (for use with Artex carbon fiber articulators (126mm) with Splitex magnetic bases installed)

AR560450 – EZ Bow System for SAM Articulators (for use with SAM 2, SAM 3, SAM SE and NEO articulators with Axiosplit magnetic bases installed)

AR560550 – EZ Bow System for KaVo Articulators (for use with KaVo articulators)

AR560650 – EZ Bow System for Denar Mark 300 Series Articulators (for use with Denar Mark 310, 320 and 330 articulators)

AR560750 – EZ Bow System for Hanau Articulators (for use with Hanau articulators with magnetic converter bases installed)

AR560850 – EZ Bow System for Whip Mix Articulators (for use with series 2000-4000 articulators with Accu-Mount table)

AR560950 – EZ Bow System for Denar Articulators (for use with Denar articulators with magnetic converter bases installed)

EZ Bows & Accessories (cont.)



AR500050 Adjustable Platform for AD2 and Panadent

The Adjustable Platform can be set to varying occlusal plane positions with our handy thumb wheel adjustment (+5mm to -5mm). When used in conjunction with our Index Trays, the Adjustable Platform assists in mounting the upper cast to the articulator. AD2's unique dual lock pin construction ensures that the platform top remains strong and stable over the life of the Adjustable Platform (no more anterior-posterior rocking). Compatible with the Kois Dento Facial Analyzer.



AR500150 Fixed Platform for AD2 and Panadent

If you're tired of checking to see if your Adjustable Platform is set to "0", try our new Fixed Platform for the AD2 and Panadent articulators. This non-adjustable platform is always at the same "0" height every time and uses the same unique, dual lock pin construction as our Adjustable Platform

Not Shown:

- AR500250 – Stratos Adjustable Platform (for use with Stratos 100, 200 and 300 articulators with Adesso base magnetic mounting)
- AR500350 – Artex Adjustable Platform (for use with Artex carbon fiber articulators (126mm) with Splitex magnetic bases installed)
- AR500450 – SAM Adjustable Platform (for use with SAM 2, SAM 3, SAM SE and NEO articulators with Axiosplit magnetic bases installed)
- AR500550 – KaVo Adjustable Platform (for use with KaVo articulators)
- AR500650 – Denar Mark 300 Series Adjustable Platform (for use with Denar Mark 310, 320 and 330 articulators)
- AR500750 – Hanau Adjustable Platform (for use with Hanau articulators with magnetic converter bases installed)
- AR500850 – Whip Mix Adjustable Platform (for use with series 2000-4000 articulators with Accu-Mount table)
- AR500950 – Denar Adjustable Platform (for use with Denar articulators with magnetic converter bases installed)



AR520150 – Laser Crosshair Unit

Need an extra laser to keep on hand? Lost your laser while teaching at a course? We've got replacement lasers for your EZ Bow in stock and ready to ship when trouble strikes.



AR950152 – 3D Bubble Level Cube

If your 3D bubble cube for your magnetic EZ Bow has gone missing, this replacement cube will "level" the situation out



AR550060 Waxing Guide Kit (set of 7 guides. Includes guides for 7.0mm - 10.0mm, in 0.5mm increments)

Mounting Plates & Accessories

At AD2, we're all about precision and affordability, which is why we've spent plenty of engineering time developing mounting systems and plates for most major articulator brands. Even if you haven't purchased one of our articulators yet, you can still enjoy savings up to 70% off of most mounting plates with our AD2 plates.



MP280000 Magnetic Mounting System

With our magnetic mounting system, AD2 provides dental professionals everything they need to work efficiently and accurately. Just attach our green anodized magnetic bases once, and you're ready to mount cases in seconds. The system includes two aluminum magnetic bases, 30 mounting plates, allen screws and a hex wrench (fully compatible with Panadent).



MP270065 AD2/Panadent/Whip Mix/SAM Screw Mounting Plates (sold in bags of 50)

If you prefer screwing your mounted cases down tight, then you'll love these plates. Sold in bags of 50, these plastic plates use self-lubricating threaded brass inserts so your models will always mount smoothly. Compatible with AD2, Panadent, Whip Mix and SAM articulators.



MP270165 Denar/Hanau (twin pin) Compatible Screw Mounting Plates (sold in bags of 50)

Looking for a plate compatible with Denar or Hanau (twin pin) articulators? Try our affordable mounting plates featuring enhanced plaster retention bridges, threaded brass inserts and solid AD2 construction.



MP270165 Denar/Hanau (twin pin) Compatible Screw Mounting Plates (sold in bags of 50)

Looking for a plate compatible with Denar or Hanau (twin pin) articulators? Try our affordable mounting plates featuring enhanced plaster retention bridges, threaded brass inserts and solid AD2 construction.



MP270165 Denar/Hanau (twin pin) Compatible Screw Mounting Plates (sold in bags of 50)

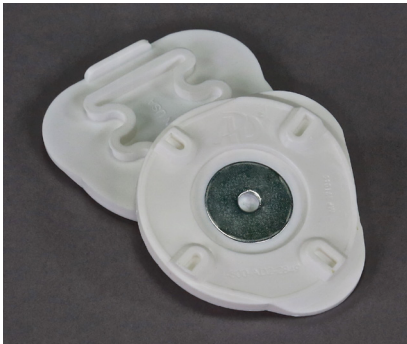
Looking for a plate compatible with Denar or Hanau (twin pin) articulators? Try our affordable mounting plates featuring enhanced plaster retention bridges, threaded brass inserts and solid AD2 construction.



MP290065 Whip Mix/Hanau/Denar Compatible Magnetic Mounting Plates (bag of 50 plates)

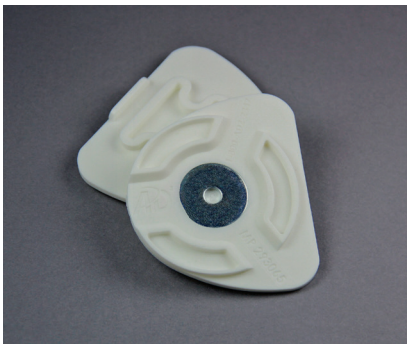
With the popularity of magnetic bases on Whip Mix® products (Whip Mix magnetic base #2003145, Denar® and Hanau™ magnetic base #2002367), AD2 offers precision and compatibility with a magnetic plate for Whip Mix magnetic bases. Please note that these mounting plates cannot be used in place of Whip Mix Quick Mount/Accu Mount plates (Whip Mix #28700-08).

Mounting Plates and Accessories *(cont.)*



MP291065 Stratos Compatible Magnetic Mounting Plates *(bag of 50 plates)*

Our Stratos compatible mounting plate fits perfectly on all Adesso magnetic bases and can be mounted on Accu-Liner articulators as well (with magnetic mounting).



MP293065 SAM Compatible Magnetic Mounting Plates *(bag of 50 plates)*

Our SAM compatible mounting plates are designed for use with SAM Axiosplit magnetic bases



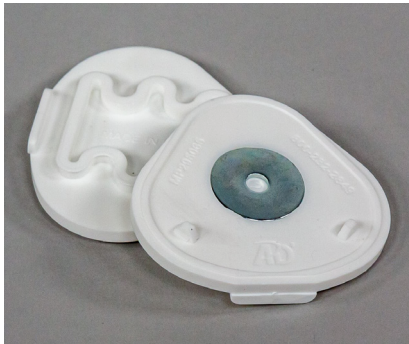
MP293065 SAM Compatible Magnetic Mounting Plates *(bag of 50 plates)*

Our popular SAM compatible mounting plate is available in yellow for easy identification.



MP294065 KaVo Compatible Magnetic Mounting Plates *(bag of 50 plates)*

Start saving today and use our KaVo compatible magnetic plates instead of Protar's expensive mounting solution.



MP295065 Denar Mark 300 Series Compatible Magnetic Mounting Plates
(bag of 50 plates)

Our Denar Mark 300 Series plates work with all Denar Mark 310, 320 and 330 articulators. We've specially designed these plates with a slightly larger perimeter to give you an easy leverage point for removing the plate from the articulator.



MP296065 Whip Mix/SAM QuickMount Magnetic Mounting Plates
(sold in bags of 50)

Tired of paying too much for the convenience of the QuickMount plate? AD2 has come to the rescue with its mounting plate for use with Whip Mix and SAM articulators. All bags are shipped with metal disks included in the price.



MP297065 Artex Compatible Magnetic Mounting Plates *(for Splitex base, sold in bags of 50)*

Our Artex compatible magnetic mounting plates are simple to use and hold your models tightly on the Splitex magnetic base. Includes both plastic plates and steel insert disks.



MP298065 BioArt/Artex Compatible Magnetic Mounting Plates *(sold in bags of 50)*

For use on all BioArt articulators in place of the Bio-Art black, "slide rail" plate. This plate can also be used on Artex carbon fiber series articulators in place of the "blue plate" (when Splitex magnetic bases have not been installed).

Mounting Plates and Accessories (cont.)



MP300065 Index Trays

(bag of 50 trays)

Manufactured in the USA from high impact plastic, our disposable Index Trays fit perfectly on the Kois Facial Analyzer Bow as well as AD2's own EZ Bow. With the same great performance and bite compound retention you've come to expect, AD2 will save you 25% on your purchase price.



MP280010 Magnetic Mounting Base Assembly

If you already have our magnetic mounting plates at your lab or office, you may only need to order the AD2 Magnetic Mounting Base Assembly. This includes the base, magnet and allen head screws.



MP280020 Magnet Holder

If you've lost the magnet holder from your articulator, the magnet won't stay attached (and you won't be able to mount cases). AD2 has plenty in stock to keep you running when things don't go quite as planned.



HW910030 Magnet

This replacement neodymium magnet provides huge magnetic retention and fits into our MP280020 magnet holder for your articulator.

Facebows & Accessories



FB400000 Anatomic Facebow

The AD2 Anatomic Facebow is a complete system including the facebow, mounting table, nasion relator, two bite fork assemblies with toggle screws and an allen head screwdriver. With integrated bubble levels and polished aluminum construction, our facebow was designed for both doctor and patient comfort.



FB400023 Mounting Table Assembly

The AD2 mounting table gets the job done quickly and accurately for you. With both high and low insertion locations for the bite fork stem assembly, this mounting table is all you need.

Facebows & Accessories (cont.)



FB400028 Flat Bite Fork

Our AD2 Flat Bite Fork is constructed of stainless steel and ready for repeated sterilizations and cleanings.



FB400029 Curved Bite Fork

If you have patients where the lower 2 molars are extruded or where the upper 2 molars are not present, try out our Curved Bite Fork. In these instances, the curved bite fork better captures posterior registration marks and is more comfortable for the patient. Like all of our bite forks, it's constructed of steel and ready for plenty of use.



FB400038 Pedo Bite Fork

When treating children, you'll want to use the AD2 Pedo Bite Fork. It has all the same traits of our adult bite fork with a shortened posterior length to accommodate a younger mouth.



FB400039 Infant Bite Fork

Constructed of stainless steel, the AD2 flat bite fork for infants offers the same comfortable fit as our adult bite fork but with a shorter anterior-posterior length.



FB401128 Edentulous Bite Fork

Our edentulous bite fork is constructed of stainless steel and is used for transferring the maxillary bite-rim and edentulous cast.



FB400015 Nasion Relator Assembly

We all know with work and travel, things sometimes get lost or misplaced. If you find yourself missing your nasion relator, it's not a problem with AD2. We can ship a replacement nasion relator assembly to you overnight if needed.



FB400115 Extended Nasion Relator

If you're taking an adjusted natural head posture facebow and want to secure the facebow with a traditional nasion, AD2 has you covered with this extended nasion, which is 0.700" (22 mm) taller than our standard nasion relator.



FB400129 Curved Bite Fork Assembly

If you need a bite fork assembly on standby for patients with extruded lower 2 molars or missing upper 2 molars, you'll want to pick up a Curved Bite Fork Assembly. This assembly includes a curved bite fork (FB400029) and a stem assembly (FB400030).



FB400030 Bite Fork Stem Assembly

Our stem assembly is simple to use and allows the bite fork to be mounted to the facebow.



FB400027 Flat Bite Fork Assembly

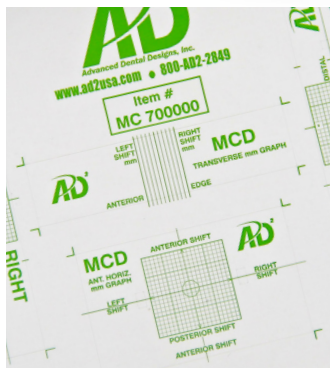
If you work on more than one patient at a time with your facebow, you'll want to purchase a few extra bite fork assemblies. This assembly includes a flat bite fork (FB400028) and a stem assembly (FB400030).

MCD & Accessories



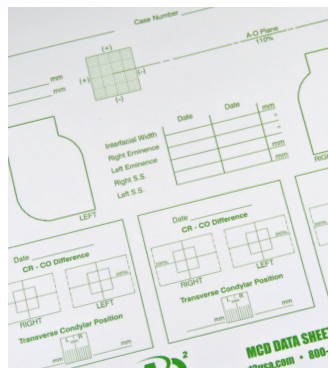
MC100010 MCD

The AD2 MCD (Measures Condyle Displacement) lines up on the same axis as the AD2 articulator and gives you critical diagnostic information when one of your basic treatment goals is seated condylar position – centric relation. Like our articulator, the MC100010 is crafted from machined aluminum, polished and green anodized for quick clean up and good looks.



MC700000 Patient Graph Pad (pad of 25 sheets)

When working with the MCD, you'll need these Patient Graph pads, which contain 25 sheets of adhesive, ready-to-use graphs. Each page includes a left and right vertical grid and a lateral horizontal grid.



MC700010 Data Record Sheets (pad of 50 sheets)

To keep your information organized, these sheets are a great place to store used adhesive patient graphs. They come 50 to a pad and are 3 hole punched for your convenience.



MC170070 Magnetic Support Column

If you've made the move to magnetic mounting, go all the way with our magnetic support column for the MCD. Precision molded in green plastic, this column will firmly hold your upper and lower MCD frames together when not in use.

Hinge Axis Recorder & Accessories



HA760000 Hinge Axis Recorder Deluxe

The AD2 Hinge Axis Recorder Deluxe System is exactly what you'd expect from us - a comprehensive system with everything you need for professional results. The system includes our HA750000 Hinge Axis Recorder as well as the AR330000 Complete Analog System. When your system arrives, you'll enjoy the best of AD2 quality including adjustable side arms, spring loaded lead holders, discluders, mounting stand, analogs with side shifts ranging from 0.5mm - 2.5mm and even multiple plaster retention rings for mounting models.



Adjustable Side Arms and Recording Frame

The adjustable side arms and recording frame are designed to be lightweight for maximum patient comfort and use single screw adjustments for all anterior-posterior and side-to-side positioning. These components use hand polished aluminum with high gloss anodized finishes. And just to be sure we give you the ultimate in smooth, we Teflon impregnate all parts.



Hinge Axis Recorder with Travel Case

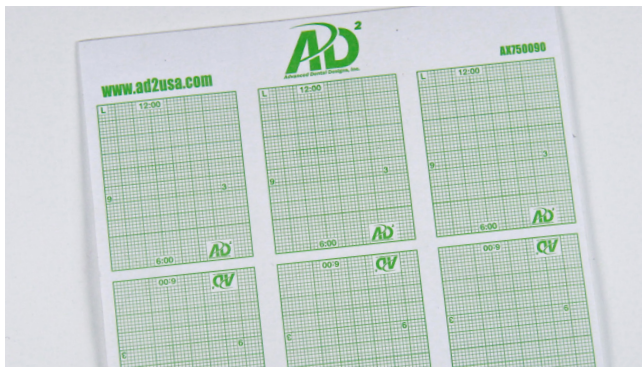
At AD2, we know all about the demands placed on top dental professionals. One day you're in the office treating patients, and the next day you're on a plane getting ready to present cases to a room full of eager minds. Don't get slowed down in the process..... the Hinge Axis Recorder arrives packed in a durable plastic case measuring just 19" x 13" x 8" (48cm x 33cm x 20cm) and weighing 9 pounds (4 Kg).

Hinge Axis Recorder & Accessories (cont.)



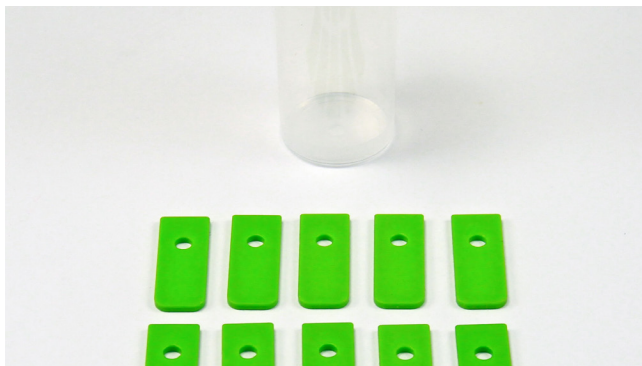
HA750000 Hinge Axis Recorder

Our entry level Hinge Axis Recorder gives you everything you need to record the mandibular pathway quickly and economically. Start with this system to experience the simplicity of the AD2 system and add in the AR330000 analog system when you're ready.



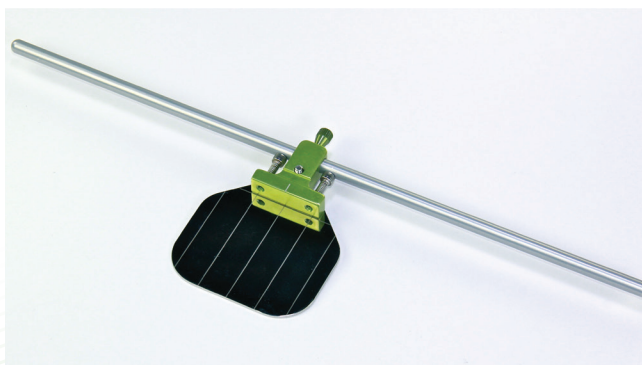
HA750090 Hinge Axis Graph Pad

When you need more adhesive graphs for your Hinge Axis Recorder, you'll be back to work quickly with our graph pad. One pad provides 30 crack-and-peel graphs, enough for 15 patients (left and right sides).



HA770010 Discluder 10 pack (Not pictured: HA770005 Discluder 5 Pack)

Save sterilization time and protect your patients using our disposable bite discluders. Packaged 5 (HA770005) or 10 (HA770010) discluders per pack, the discluder kit also includes a long allen head screw for use with the AD2 clutch plate bracket. You'll be able to stack multiple discluders (2mm thick) to handle any patient bite.



HA750010 Clutch Bracket Assembly

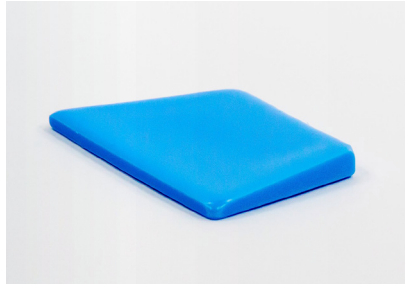
When you have multiple patients in process, save yourself headaches by having extra clutch bracket assemblies for use with your Hinge Axis Recorder. No more need to pour messy plaster. With your Biocryl "suck down" bonded to the clutch bracket, your patient will be comfortable while you save time.

Delar Wax Products & Accessories



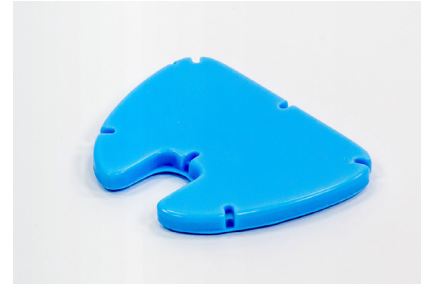
DL600008 Delar 3”x 3” Bite Registration Wax (1 lb. box containing 24 sheets)

Formerly Delar #BRS3X3, these are the wax sheets you've trusted for years. Sheets are approximately 1/8" thick.



DL600013 Delar Tapered Wax Wafers (box of 25)

Formerly Delar #TWW052, these wax wafers are thicker in the anterior portion.



DL600016 Delar Centric Record Set (box of 25)

Formerly Delar #CRW005, these wafers have aluminum reinforcement for extra durability

Not Shown: DL600015 – Centric Record System w/shims (25 wafers, 50 shims and 1 oz sticky wax)



DL600021 Delar Regular D-Style Wax Wafers (box of 25)

Formerly Delar #BRW050, these D-shaped wafers have a uniform thickness



DL600022 Delar Mandibular Guide Shims (pack of 200)

Delar's aluminum centric shims are .4mm thick and ideal for "challenging the bite".

Delar Wax Products & Accessories *(cont.)*



DL600023 Delar Full Bite Fork Rim *(box of 12)*

Formerly Delar #BFR003, these rims will slide onto a traditional bite fork and cover the top and bottom



DL600024 Delar Half Bite Fork Rim *(box of 24)*

Formerly Delar #BFR004, these half rims will cover the top or bottom of a traditional bite fork



DL600025 Delar Wax Pencils *(box of 32)*

Formerly Delar #RPW001, Delar pencils can be heated to drop small amounts of wax individually where desired



DL600026 Delar Large D-Style Wax Wafers *(box of 25)*

Formerly Delar #BRW151, these oversized D-style wafers are used very larger anatomy



DL600027 Delar Sticky Wax *(1 oz.)*

Formerly Delar #SWA010, Delar sticky wax can be used when stacking mandibular guide shims



DL600028 Delar Perforated Wax Wafer *(box of 25)*

These wafers are thicker in the anterior portion and allow for bites to be taken with a deprogrammer in place

Equipment Systems

While buying equipment individually allows you to custom tailor your needs, AD2 also offers preconfigured systems using our most popular products. Not only does this simplify the ordering process for you, but it also saves you 10-15% in cost versus buying individually.



AR100008 AD2 Magnetic Professional System with AR100012 Articulator. Not shown:

- » AR100005 AD2 Professional System with AR100011 Articulator, uses non-magnetic mounting,
- » AR100006 AD2 Professional System with AR100012 Articulator, uses non-magnetic mounting,
- » AR100007 AD2 Magnetic Professional System with AR100011 Articulator

Equipment Systems *(cont.)*

Professional EZ System

The Professional EZ System gives you a complete system of dedicated instruments offering exceptional precision and convenience using our EZ Bow instead of an anatomic facebow. Your system arrives packed in the travel case, pre-installed with all accessories, ready to use and includes all of the items below:

- AR100021 Articulator with a straight incisal pin module
- AR560150 EZ Bow System
- MC100010 MCD
- AR100080 Mounting Stand
- AR300000 Support Leg
- MP280000 Magnetic Mounting System (includes 30 mounting plates)
- MP280010 Magnetic Mounting Bases (2)
- MP170070 MCD Magnetic Support Column
- MC700000 MCD Patient Graphs (pad of 25 sheets)
- MC700010 Data Record Sheets (pad of 50 sheets)
- PK900010 Plastic Travel Case



AR540300 Professional EZ System (Not Shown: AR540350 Professional EZ System. Same as AR540300 but uses a curved incisal pin instead of straight)

EZ Deluxe System

The EZ Deluxe System gives you a basic system of dedicated instruments offering exceptional precision and convenience using our EZ Bow. Your system arrives ready to use and includes all of the items below:

- AR10022 Articulator with a curved incisal pin module
- AR560150 EZ Bow System
- AR300000 Support Leg
- MP280010 Magnetic Bases (2)
- MP280061 Magnetic Mounting Plates (2)



AR540220 EZ Deluxe System (Not Shown: AR540200 EZ Deluxe System - uses AR100021 Straight Incisal Pin articulator)

Equipment Systems *(cont.)*

EZ Cruiser System

The EZ Cruiser System gives you a complete system for doctors taking courses at The Kois Center or those clinicians that always set the angle of eminence at 20 degrees. Your system arrives ready to use and includes all of the items below:

- AR510200 Cruiser Articulator
- AR560150 EZ Bow System
- Index Trays (20)
- Magnetic Mounting Plates (30)



AR550200 EZ Cruiser System (Not Shown: AR550100 EZ Cruiser System - includes test column and mounting stand)

Bioesthetic Basic Magnetic System

The Bioesthetic Basic Magnetic System has everything you'll need for Bioesthetic Diagnosis (Level II) courses to mount cases magnetically including:

- AR10012 Articulator with a Curved Incisal Pin module, mounting stand and test column
- MC100010 MCD
- FB400000 Anatomic Facebow
- AR300000 Support Leg (2)
- MP280000 Magnetic Mounting System
- MP280010 Magnetic Mounting Bases (2)a
- TP400027 Bite Fork Stabilizers (pack of 60)
- AR500025 Accu-Trays (pack of 25)
- MP170070 MCD Magnetic Support Column
- MC700000 MCD Patient Graphs (pad of 25 sheets)
- MC700010 Data Record Sheets (pad of 50 sheets)
- PK900010 Plastic Travel Case



AR110051 Bioesthetic Basic Magnetic System (Not Shown: AR110050 Bioesthetic Basic System, uses non-magnetic mounting)

Equipment Systems *(cont.)*

Bioesthetic Magnetic Professional System

The Bioesthetic Magnetic Professional System has everything you'll need for Biologic Treatment (Level III) courses to mount cases magnetically including the Bioesthetic Basic Magnetic System (AR110051) and our Hinge Axis Recorder Deluxe System (HA760000). Your Magnetic Professional System will include:

- AR10012 Articulator with a Curved Incisal Pin module, mounting stand and test column
- MC100010 MCD
- FB400000 Anatomic Facebow
- HA760000 Hinge Axis Recorder Deluxe
- MP280000 Magnetic Mounting System
- MP280010 Magnetic Mounting Bases (3)
- TP400027 Bite Fork Stabilizers (pack of 60)
- AR500025 Accu-Trays (pack of 25)
- MP170070 MCD Magnetic Support Column
- MC700000 MCD Patient Graphs (pad of 25 sheets)
- MC700010 Data Record Sheets (pad of 50 sheets)
- PK900010 Plastic Travel Case
- AR300000 Support Leg



AR110061 Bioesthetic Magnetic Professional System (Not Shown: AR110060 Bioesthetic Professional System, uses non-magnetic mounting)

Dental Supplies



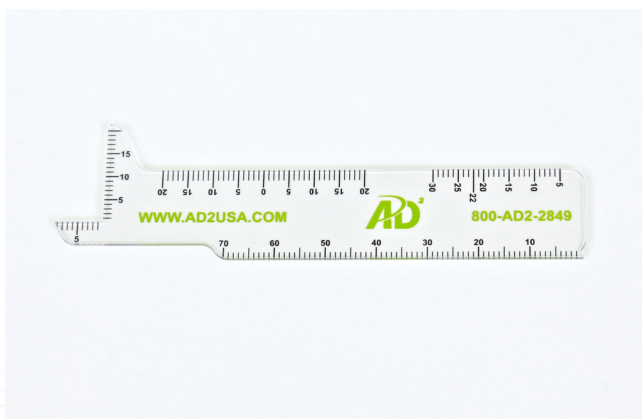
AR500025 Accu-Trays (box of 25 trays)

Accu-Trays are a great way for taking interocclusal records and border records (lateral, protrusive and centric). They're compatible with most bite registration materials, constructed of aluminum and gold anodized for good looks.



AR550060 Waxing Guide Kit (set of 7 guides)

Includes guides for 7.0mm - 10.0mm, in 0.5mm increments



AR600010 Aesthetic Ruler

Aesthetic Ruler Our clear plastic Aesthetic Ruler can be used to measure overbite, overjet, tooth lengths and widths and more.

Dental Supplies (cont.)



DS100010 Class 1 Lucia Jigs (box of 25)

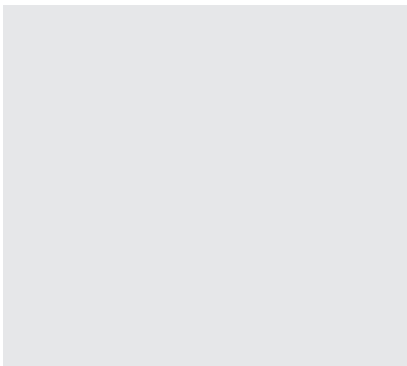
Our Class 1 Lucia Jig will de-program muscles, allow the condyles to seat properly and assist the clinician in obtaining centric relation. Can be fitted using brown stick compound, light cure material or acrylic.

Not Shown: DS100020 (Class 2 Lucia Jigs, box of 25)



TP400027 Bite Fork Stabilizers (pack of 60)

Our Bite Fork Stabilizers are composed of a white foam material with self-adhesive on one side for affixing to a bite fork. These stabilizers are an easy alternative to bite registration material or cotton rolls and allow the lower teeth to support the bite fork against the upper teeth



FB400050 Plastic Bite Fork

TBD

Inside Back Cover Blank



Advanced Dental Designs, Inc.
9880 Indiana Avenue, #4
Riverside, CA 92503

1-800-AD2-2849

www.ad2usa.com