

Assembling the Bitefork Toggle Clamps for the AD2 Anatomic Facebow



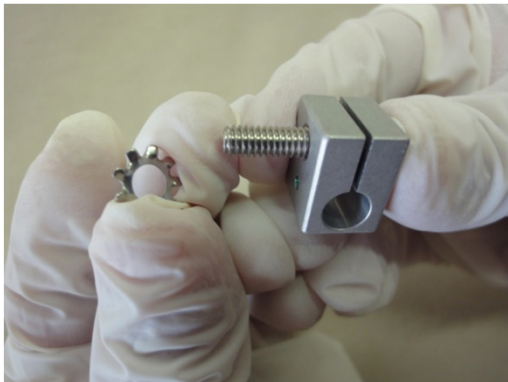
When using the facebow, you can accidentally disassemble the toggle clamp assembly. Unless you re-assemble it correctly, the clamp will not tighten around the bitefork and stem assembly. Not to worry though..... the simple steps below show you exactly what to do to get back to work quickly.



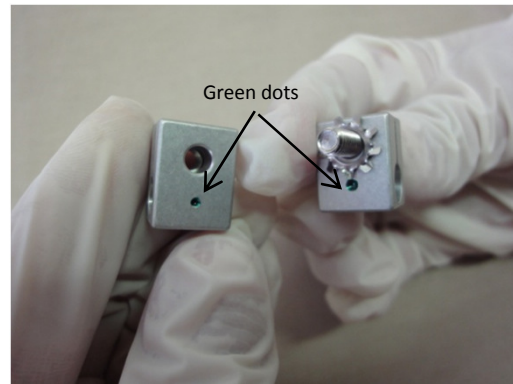
1) The four components of the toggle clamp assembly: the upper clamp, lower clamp, allen screw and lock washer.



2) Insert the allen screw into the upper clamp. Note that the upper clamp has a large recessed area for the screw head to fit in.



3) Place the lock washer over the screw (the washer will be between the upper and lower clamps when fully assembled).



4) Prepare the upper and lower clamps for assembly by ensuring that the threaded portion of the hole on the lower clamp faces out (the lower clamp is threaded on one side only). On newer versions of the clamps, the small green dots (pictured above) will face each other when properly assembled.



5) Use the allen screwdriver provided to screw the upper and lower clamps together. To prevent damage to the clamps, do not firmly tighten the clamps until the bitefork and stem assembly are inserted.



6) The final clamp assembly should look as pictured above and is ready to use again.